

## **Obed Ave between Dysart Rd and Tillicum Rd**

**October 28, 2019 To November 01, 2019**



The data presented here is for information purposes only and should not be considered authoritative for construction, geotechnical, engineering, navigational, legal, or other site-specific uses. The information shared is owned by the Transportation Division of the Engineering Department at the District of Saanich. Accuracy is not guaranteed.

Start Date: 28-Oct-19  
 Start Time: 0:14  
 Station ID: C0052-02

**Location 1: Obed Ave between Dysart Rd and Tillicum Rd**

Note:

DATE:	October 28, 2019		October 29, 2019		October 30, 2019		October 31, 2019		November 1, 2019		WK AVG		WK AVG	HOURLY
	MON		TUE		WED		THURS		FRI		EB	WB	CH 1+2	%
Time:	EB	WB	EB	WB	EB	WB	EB	WB	EB	WB	EB	WB		
12-1 AM			6	3	6	6	1	2			4	4	8	0.4%
1-2 AM			1	2	1	3	2	3			1	3	4	0.2%
2-3 AM			1	0	1	0	0	1			1	0	1	0.1%
3-4 AM			1	1	2	1	0	0			1	1	2	0.1%
4-5 AM			2	1	1	0	2	1			2	1	2	0.1%
5-6 AM			4	0	4	1	6	3			5	1	6	0.3%
6-7 AM			23	12	27	11	23	11			24	11	36	1.9%
7-8 AM			55	25	52	26	52	25			53	25	78	4.3%
8-9 AM			65	46	81	52	68	52			71	50	121	6.6%
9-10 AM			52	48	44	44	50	46			49	46	95	5.2%
10-11 AM			41	44	40	39	45	40			42	41	83	4.5%
11-12 PM			42	46	56	60	43	58			47	55	102	5.5%
12-1 PM			51	74	41	59	49	70			47	68	115	6.3%
1-2 PM			41	68	40	57	50	55			44	60	104	5.7%
2-3 PM			56	66	50	60	58	80			55	69	123	6.7%
3-4 PM			54	97	62	86	68	114			61	99	160	8.7%
4-5 PM			72	116	73	118	79	140			75	125	199	10.9%
5-6 PM			77	119	70	137	77	139			75	132	206	11.3%
6-7 PM			54	79	48	86	42	60			48	75	123	6.7%
7-8 PM			28	77	32	61	33	66			31	68	99	5.4%
8-9 PM			16	37	23	39	35	29			25	35	60	3.3%
9-10 PM			24	30	17	43	32	47			24	40	64	3.5%
10-11 PM			3	17	14	19	10	20			9	19	28	1.5%
11-12 AM			7	6	3	6	5	16			5	9	14	0.8%
<b>LANES</b>			<b>776</b>	<b>1014</b>	<b>788</b>	<b>1014</b>	<b>830</b>	<b>1078</b>			<b>798</b>	<b>1035</b>	<b>1833</b>	<b>100.0%</b>
<b>TOTAL</b>			<b>1790</b>		<b>1802</b>		<b>1908</b>				<b>1840</b>			
	MON		TUE		WED		THURS		FRI		WK AVG			

PEAK HOUR					TOTAL VEHICALS-PEAK PERIODS		2 HOUR PEAK INTERVALS				
MAX. 7 - 9 am PEAK HOUR	121	⇒	6.6%	between 8-9 AM	822	⇒	6 HR TOTAL	<b>2 HR AM (7 - 9 AM)</b>			
MAX. 7 - 11 am PEAK HOUR	121	⇒	6.6%	between 8-9 AM	605	⇒	4 HR TOTAL	VEH / HR	VEH / 2HR	2 HR %	
								7-8 AM	78	200	10.9%
								8-9 AM	121		
MAX. 11 am - 1 pm PEAK HOUR	115	⇒	6.3%	between 12-1 PM	<b>24 HOUR FACTORS</b>		<b>2 HR NOON (11 - 1 PM)</b>				
MAX. 11 am - 3 pm PEAK HOUR	123	⇒	6.7%	between 2-3 PM			VEH / HR	VEH / 2HR	2 HR %		
							11-12 PM	102	216	11.8%	
MAX. 4 - 6 pm PEAK HOUR	206	⇒	11.3%	between 5-6 PM	2.23	⇒	6-24 HR FACT.	12-1 PM	115		
MAX. 3 - 6 pm PEAK HOUR	206	⇒	11.3%	between 5-6 PM	3.03	⇒	4-24 HR FACT.	<b>2 HR PM (4 - 6 PM)</b>			
								VEH / HR	VEH / 2HR	2 HR %	
								4-5 PM	199	406	22.1%
								5-6 PM	206		

# Obed Ave between Dysart Rd and Tillicum Rd

Westbound

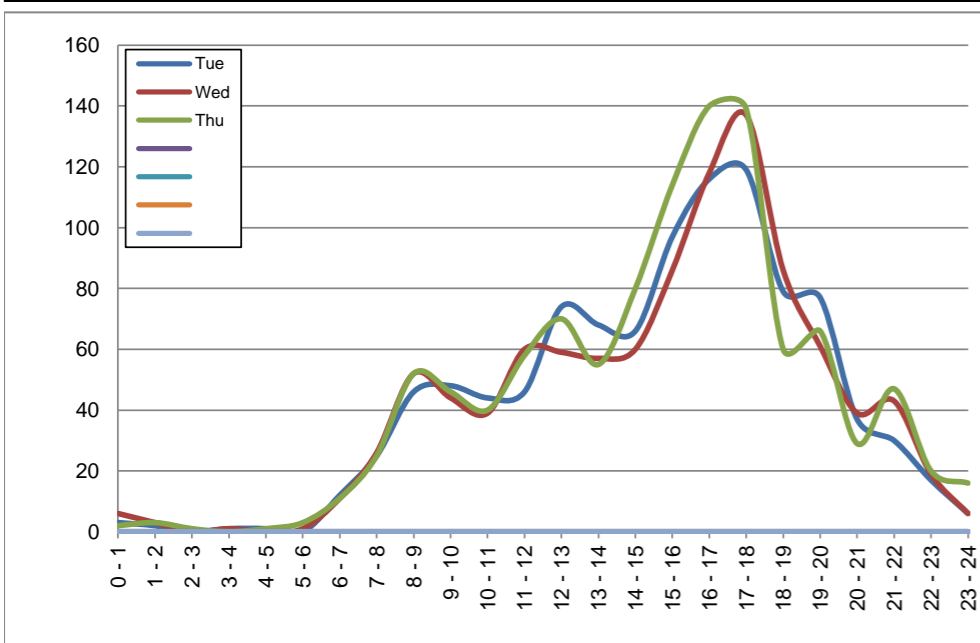
October 29, 2019 to October 31, 2019

## Hourly Volumes

Time Period	Tue	Wed	Thu			
	Oct 29	Oct 30	Oct 31			
0 - 1	3	6	2			
1 - 2	2	3	3			
2 - 3	0	0	1			
3 - 4	1	1	0			
4 - 5	1	0	1			
5 - 6	0	1	3			
6 - 7	12	11	11			
7 - 8	25	26	25			
8 - 9	46	52	52			
9 - 10	48	44	46			
10 - 11	44	39	40			
11 - 12	46	60	58			
12 - 13	74	59	70			
13 - 14	68	57	55			
14 - 15	66	60	80			
15 - 16	97	86	114			
16 - 17	116	118	140			
17 - 18	119	137	139			
18 - 19	79	86	60			
19 - 20	77	61	66			
20 - 21	37	39	29			
21 - 22	30	43	47			
22 - 23	17	19	20			
23 - 24	6	6	16			
<b>Day Total</b>	<b>1014</b>	<b>1014</b>	<b>1078</b>			

## 15-Minute Volumes

Time Start	Tue	Wed	Thu				Time Start	Tue	Wed	Thu			
	Oct 29	Oct 30	Oct 31					Oct 29	Oct 30	Oct 31			
0:00	0	1	0				12:00	22	14	17			
0:15	1	1	1				12:15	16	18	21			
0:30	1	2	0				12:30	14	13	14			
0:45	1	2	1				12:45	22	14	18			
1:00	1	1	1				13:00	16	9	15			
1:15	1	1	0				13:15	22	14	11			
1:30	0	1	1				13:30	15	15	19			
1:45	0	0	1				13:45	15	19	10			
2:00	0	0	1				14:00	16	21	20			
2:15	0	0	0				14:15	8	12	15			
2:30	0	0	0				14:30	22	10	24			
2:45	0	0	0				14:45	20	17	21			
3:00	0	0	0				15:00	20	19	20			
3:15	0	1	0				15:15	24	24	27			
3:30	0	0	0				15:30	26	19	30			
3:45	1	0	0				15:45	27	24	37			
4:00	1	0	0				16:00	19	32	42			
4:15	0	0	1				16:15	32	28	31			
4:30	0	0	0				16:30	32	25	27			
4:45	0	0	0				16:45	33	33	40			
5:00	0	0	0				17:00	34	39	35			
5:15	0	0	1				17:15	31	35	47			
5:30	0	0	0				17:30	38	33	25			
5:45	0	1	2				17:45	16	30	32			
6:00	3	2	4				18:00	23	34	19			
6:15	1	2	1				18:15	27	24	22			
6:30	3	1	1				18:30	16	14	10			
6:45	5	6	5				18:45	13	14	9			
7:00	5	7	7				19:00	23	24	16			
7:15	6	5	7				19:15	27	20	22			
7:30	7	6	2				19:30	21	11	11			
7:45	7	8	9				19:45	6	6	17			
8:00	8	8	6				20:00	10	9	2			
8:15	8	15	9				20:15	7	11	7			
8:30	13	9	10				20:30	9	9	8			
8:45	17	20	27				20:45	11	10	12			
9:00	15	16	11				21:00	7	11	16			
9:15	13	9	14				21:15	10	13	11			
9:30	12	9	11				21:30	7	11	13			
9:45	8	10	10				21:45	6	8	7			
10:00	4	7	14				22:00	6	4	5			
10:15	16	9	8				22:15	1	4	1			
10:30	11	11	8				22:30	3	9	9			
10:45	13	12	10				22:45	7	2	5			
11:00	11	15	10				23:00	1	2	3			
11:15	9	20	19				23:15	2	0	4			
11:30	13	15	10				23:30	2	2	6			
11:45	13	10	19				23:45	1	2	3			



Site notes:

# Obed Ave between Dysart Rd and Tillicum Rd

Eastbound

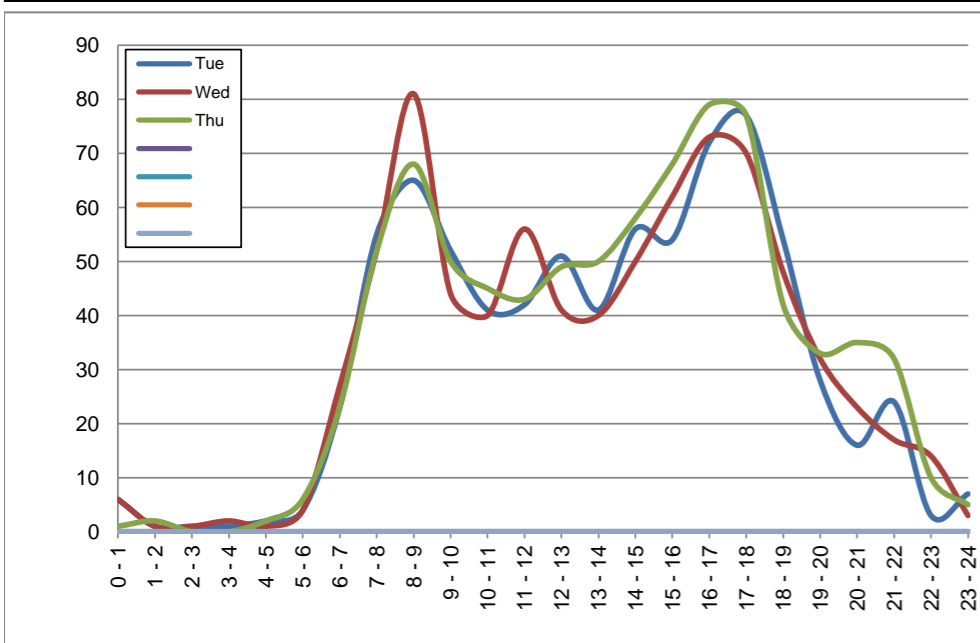
October 29, 2019 to October 31, 2019

## Hourly Volumes

Time Period	Tue	Wed	Thu			
	Oct 29	Oct 30	Oct 31			
0 - 1	6	6	1			
1 - 2	1	1	2			
2 - 3	1	1	0			
3 - 4	1	2	0			
4 - 5	2	1	2			
5 - 6	4	4	6			
6 - 7	23	27	23			
7 - 8	55	52	52			
8 - 9	65	81	68			
9 - 10	52	44	50			
10 - 11	41	40	45			
11 - 12	42	56	43			
12 - 13	51	41	49			
13 - 14	41	40	50			
14 - 15	56	50	58			
15 - 16	54	62	68			
16 - 17	72	73	79			
17 - 18	77	70	77			
18 - 19	54	48	42			
19 - 20	28	32	33			
20 - 21	16	23	35			
21 - 22	24	17	32			
22 - 23	3	14	10			
23 - 24	7	3	5			
<b>Day Total</b>	<b>776</b>	<b>788</b>	<b>830</b>			

## 15-Minute Volumes

Time Start	Tue	Wed	Thu				Time Start	Tue	Wed	Thu			
	Oct 29	Oct 30	Oct 31					Oct 29	Oct 30	Oct 31			
0:00	1	2	1				12:00	13	9	11			
0:15	3	1	0				12:15	12	13	19			
0:30	1	0	0				12:30	14	8	10			
0:45	1	3	0				12:45	12	11	9			
1:00	0	0	0				13:00	15	7	10			
1:15	0	0	1				13:15	6	8	10			
1:30	1	1	0				13:30	8	12	18			
1:45	0	0	1				13:45	12	13	12			
2:00	1	1	0				14:00	16	17	13			
2:15	0	0	0				14:15	13	8	15			
2:30	0	0	0				14:30	15	14	14			
2:45	0	0	0				14:45	12	11	16			
3:00	0	0	0				15:00	8	18	18			
3:15	0	0	0				15:15	21	16	18			
3:30	1	2	0				15:30	9	13	13			
3:45	0	0	0				15:45	16	15	19			
4:00	1	0	0				16:00	21	15	23			
4:15	0	1	1				16:15	16	16	28			
4:30	0	0	0				16:30	19	22	16			
4:45	1	0	1				16:45	16	20	12			
5:00	1	1	0				17:00	25	21	16			
5:15	0	1	1				17:15	13	19	24			
5:30	2	1	4				17:30	27	15	21			
5:45	1	1	1				17:45	12	15	16			
6:00	2	5	5				18:00	14	13	15			
6:15	5	4	5				18:15	13	10	14			
6:30	8	10	7				18:30	16	10	7			
6:45	8	8	6				18:45	11	15	6			
7:00	6	7	4				19:00	11	14	7			
7:15	11	10	10				19:15	4	6	8			
7:30	16	19	14				19:30	7	4	9			
7:45	22	16	24				19:45	6	8	9			
8:00	20	20	18				20:00	5	7	4			
8:15	23	24	20				20:15	4	7	9			
8:30	14	20	17				20:30	3	4	10			
8:45	8	17	13				20:45	4	5	12			
9:00	16	14	19				21:00	4	4	10			
9:15	9	10	13				21:15	4	5	7			
9:30	10	11	10				21:30	12	6	9			
9:45	17	9	8				21:45	4	2	6			
10:00	11	7	10				22:00	1	3	3			
10:15	9	13	9				22:15	1	4	2			
10:30	11	11	19				22:30	1	4	2			
10:45	10	9	7				22:45	0	3	3			
11:00	11	12	12				23:00	2	1	3			
11:15	8	12	10				23:15	1	1	1			
11:30	13	24	12				23:30	2	1	1			
11:45	10	8	9				23:45	2	0	0			



Site notes:

# Vehicle Speed Summary

Saanich Engineering Department

Count Id: [C0052-02](#)

Filename: [Obed Ave between Dysart Rd and Tillicum Rd-Oct-2019.xlsm](#)

**Location:** Obed Ave between Dysart Rd and Tillicum Rd

Note:

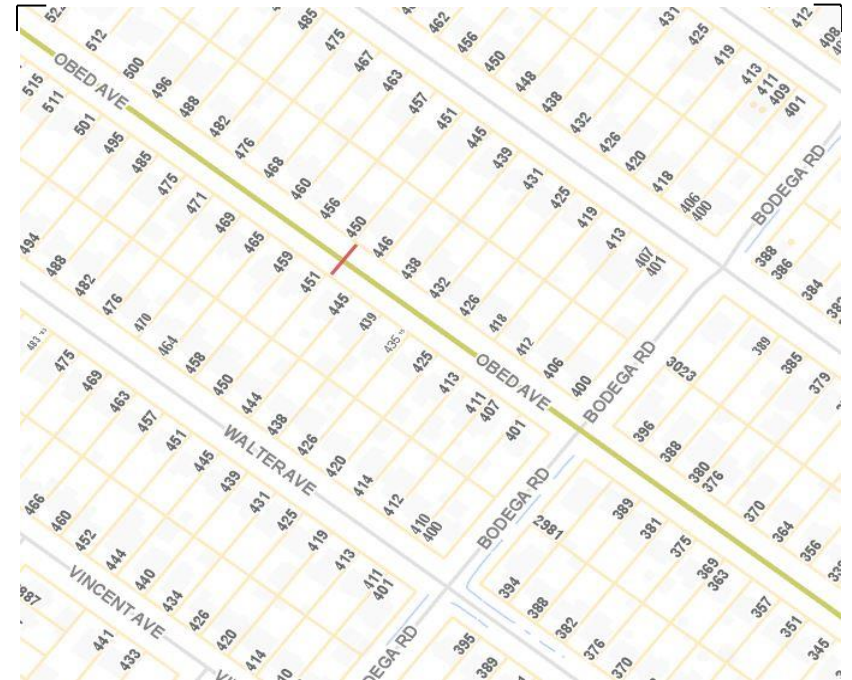
Direction: **East-West**

Dates: **October 28, 2019 To November 01, 2019**

*Filtered data*

AVG. SPEED	<b>27</b> mph	<b>43</b> km/h
50 % SPEED	<b>27</b> mph	<b>44</b> km/h
85 % SPEED	<b>32</b> mph	<b>52</b> km/h
95 % SPEED	<b>35</b> mph	<b>57</b> km/h

Location Map



**Obed Ave between Dysart Rd and Tillicum Rd**

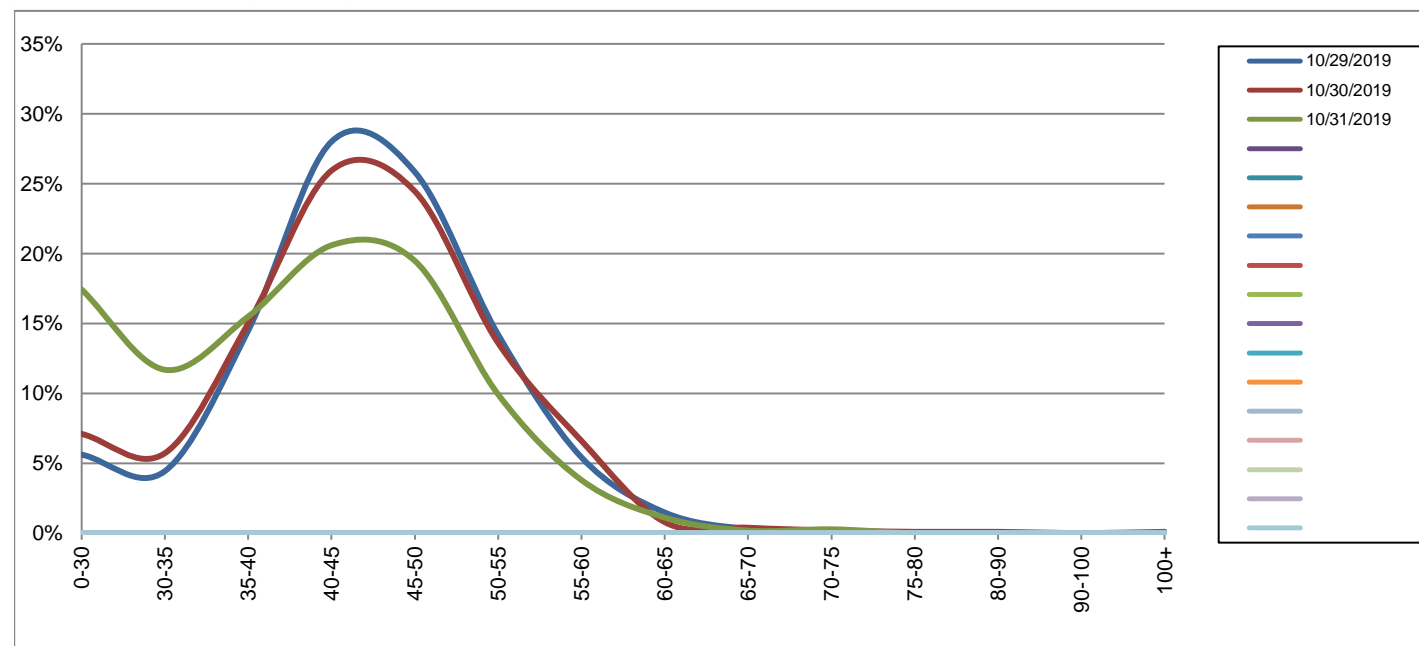
Westbound

October 29, 2019 to October 31, 2019

Daily Speed Bin Percentages															Daily Speed Bin Volumes														Total	Avg.
Bin #	1	2	3	4	5	6	7	8	9	10	11	12	13	14	1	2	3	4	5	6	7	8	9	10	11	12	13	14	Volume	Speed
Bin Speeds	0-30	30-35	35-40	40-45	45-50	50-55	55-60	60-65	65-70	70-75	75-80	80-90	90-100	100+	0-30	30-35	35-40	40-45	45-50	50-55	55-60	60-65	65-70	70-75	75-80	80-90	90-100	100+		
10/29/2019	5.6%	4.4%	14.5%	28.0%	25.8%	14.2%	5.4%	1.5%	0.3%	0.1%	0.0%	0.0%	0.0%	0.1%	57	45	147	284	262	144	55	15	3	1	0	0	0	1	1014	44
10/30/2019	7.1%	5.7%	15.0%	25.9%	24.5%	13.6%	6.6%	0.8%	0.4%	0.2%	0.1%	0.1%	0.0%	0.0%	72	58	152	263	248	138	67	8	4	2	1	1	0	0	1014	43
10/31/2019	17.4%	11.7%	15.5%	20.6%	19.5%	9.9%	3.8%	1.1%	0.2%	0.3%	0.0%	0.0%	0.0%	0.0%	188	126	167	222	210	107	41	12	2	3	0	0	0	0	1078	39
<b>Total</b>	<b>10.2%</b>	<b>7.4%</b>	<b>15.0%</b>	<b>24.8%</b>	<b>23.2%</b>	<b>12.5%</b>	<b>5.2%</b>	<b>1.1%</b>	<b>0.3%</b>	<b>0.2%</b>	<b>0.0%</b>	<b>0.0%</b>	<b>0.0%</b>	<b>0.0%</b>	<b>317</b>	<b>229</b>	<b>466</b>	<b>769</b>	<b>720</b>	<b>389</b>	<b>163</b>	<b>35</b>	<b>9</b>	<b>6</b>	<b>1</b>	<b>1</b>	<b>0</b>	<b>1</b>	<b>3106</b>	<b>42</b>

**Speed Data Summary**

Bin #	1	2	3	4	5	6	7	8	9	10	11	12	13	14	Total
Bin Speeds	0-30	30-35	35-40	40-45	45-50	50-55	55-60	60-65	65-70	70-75	75-80	80-90	90-100	100+	
Survey Total	317	229	466	769	720	389	163	35	9	6	1	1	0	1	3106
% Total	10.2%	7.4%	15.0%	24.8%	23.2%	12.5%	5.2%	1.1%	0.3%	0.2%	0.0%	0.0%	0.0%	0.0%	100%
Accumulated %	10.2%	17.6%	32.6%	57.3%	80.5%	93.0%	98.3%	99.4%	99.7%	99.9%	99.9%	100.0%	100.0%	100%	
Inverse Accum. %	89.8%	82.4%	67.4%	42.7%	19.5%	7.0%	1.7%	0.6%	0.3%	0.1%	0.1%	0.0%	0.0%	0.0%	
Average Speed	42 KM/H														



Site notes:

**Obed Ave between Dysart Rd and Tillicum Rd**

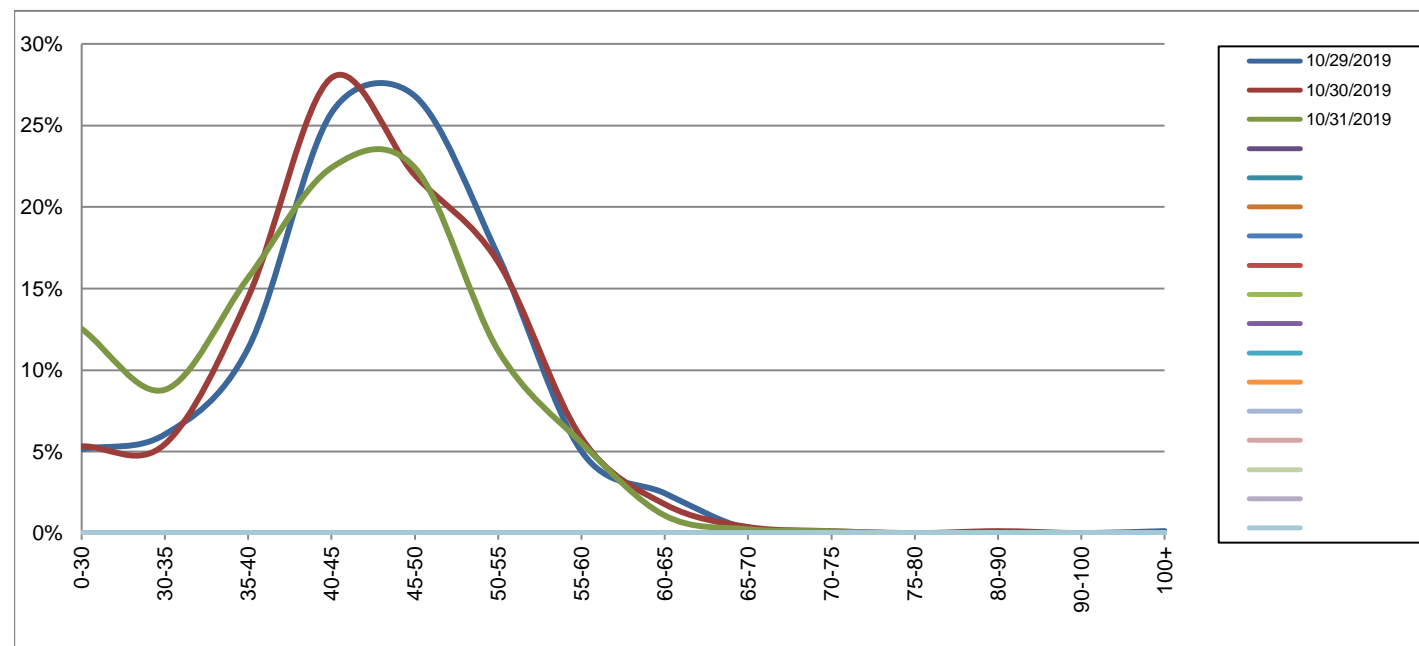
Eastbound

October 29, 2019 to October 31, 2019

Daily Speed Bin Percentages															Daily Speed Bin Volumes														Total	Avg.
Bin #	1	2	3	4	5	6	7	8	9	10	11	12	13	14	1	2	3	4	5	6	7	8	9	10	11	12	13	14	Volume	Speed
Bin Speeds	0-30	30-35	35-40	40-45	45-50	50-55	55-60	60-65	65-70	70-75	75-80	80-90	90-100	100+	0-30	30-35	35-40	40-45	45-50	50-55	55-60	60-65	65-70	70-75	75-80	80-90	90-100	100+		
10/29/2019	5.2%	6.1%	11.3%	25.8%	26.8%	17.0%	5.0%	2.4%	0.3%	0.0%	0.0%	0.0%	0.0%	0.1%	40	47	88	200	208	132	39	19	2	0	0	0	0	1	776	44
10/30/2019	5.3%	5.5%	14.5%	27.9%	22.0%	16.6%	5.8%	1.8%	0.4%	0.1%	0.0%	0.1%	0.0%	0.0%	42	43	114	220	173	131	46	14	3	1	0	1	0	0	788	44
10/31/2019	12.5%	8.8%	15.7%	22.4%	22.4%	11.2%	5.5%	1.1%	0.2%	0.1%	0.0%	0.0%	0.0%	0.0%	104	73	130	186	186	93	46	9	2	1	0	0	0	0	830	41
<b>Total</b>	<b>7.8%</b>	<b>6.8%</b>	<b>13.9%</b>	<b>25.3%</b>	<b>23.7%</b>	<b>14.9%</b>	<b>5.5%</b>	<b>1.8%</b>	<b>0.3%</b>	<b>0.1%</b>	<b>0.0%</b>	<b>0.0%</b>	<b>0.0%</b>	<b>0.0%</b>	<b>186</b>	<b>163</b>	<b>332</b>	<b>606</b>	<b>567</b>	<b>356</b>	<b>131</b>	<b>42</b>	<b>7</b>	<b>2</b>	<b>0</b>	<b>1</b>	<b>0</b>	<b>1</b>	<b>2394</b>	<b>43</b>

**Speed Data Summary**

Bin #	1	2	3	4	5	6	7	8	9	10	11	12	13	14	Total
Bin Speeds	0-30	30-35	35-40	40-45	45-50	50-55	55-60	60-65	65-70	70-75	75-80	80-90	90-100	100+	
Survey Total	186	163	332	606	567	356	131	42	7	2	0	1	0	1	2394
% Total	7.8%	6.8%	13.9%	25.3%	23.7%	14.9%	5.5%	1.8%	0.3%	0.1%	0.0%	0.0%	0.0%	0.0%	100%
Accumulated %	7.8%	14.6%	28.4%	53.8%	77.4%	92.3%	97.8%	99.5%	99.8%	99.9%	99.9%	100.0%	100.0%	100%	
Inverse Accum. %	92.2%	85.4%	71.6%	46.2%	22.6%	7.7%	2.2%	0.5%	0.2%	0.1%	0.1%	0.0%	0.0%	0.0%	
Average Speed	43 KM/H														



Site notes:

**Obed Ave between Dysart Rd and Tillicum Rd**

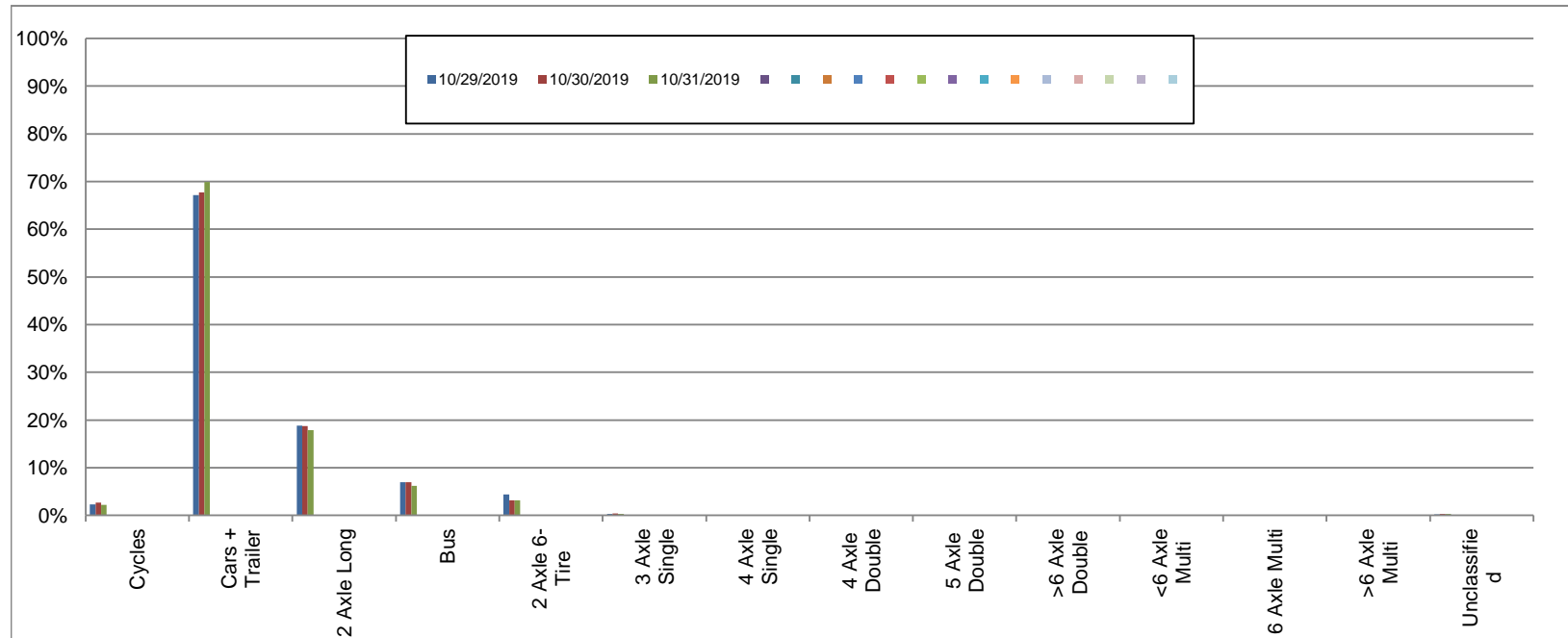
Westbound

October 29, 2019 to October 31, 2019

Daily Class Bin Percentages															Daily Class Bin Volumes															
Bin #	1	2	3	4	5	6	7	8	9	10	11	12	13	14	1	2	3	4	5	6	7	8	9	10	11	12	13	14	Total Volume	
Bin Class	Cycles	Cars + Trailer	2 Axle Long	Bus	2 Axle 6-Tire	3 Axle Single	4 Axle Single	4 Axle Double	5 Axle Double	>6 Axle Double	<6 Axle Multi	6 Axle Multi	>6 Axle Multi	Unclassified	Cycles	Cars + Trailer	2 Axle Long	Bus	2 Axle 6-Tire	3 Axle Single	4 Axle Single	4 Axle Double	5 Axle Double	>6 Axle Double	<6 Axle Multi	6 Axle Multi	>6 Axle Multi	Unclassified		
10/29/2019	2.3%	67.2%	18.8%	6.9%	4.3%	0.3%	0.0%	0.0%	0.0%	0.0%	0.0%	0.0%	0.0%	0.2%	23	681	191	70	44	3	0	0	0	0	0	0	0	0	2	1014
10/30/2019	2.7%	67.8%	18.7%	6.9%	3.2%	0.4%	0.0%	0.1%	0.0%	0.0%	0.0%	0.0%	0.0%	0.3%	27	687	190	70	32	4	0	1	0	0	0	0	0	0	3	1014
10/31/2019	2.2%	69.9%	17.9%	6.2%	3.2%	0.3%	0.0%	0.0%	0.0%	0.0%	0.0%	0.0%	0.0%	0.3%	24	754	193	67	34	3	0	0	0	0	0	0	0	0	3	1078
<b>Total</b>	<b>2.4%</b>	<b>68.3%</b>	<b>18.5%</b>	<b>6.7%</b>	<b>3.5%</b>	<b>0.3%</b>	<b>0.0%</b>	<b>0.0%</b>	<b>0.0%</b>	<b>0.0%</b>	<b>0.0%</b>	<b>0.0%</b>	<b>0.0%</b>	<b>0.3%</b>	<b>74</b>	<b>2122</b>	<b>574</b>	<b>207</b>	<b>110</b>	<b>10</b>	<b>0</b>	<b>1</b>	<b>0</b>	<b>0</b>	<b>0</b>	<b>0</b>	<b>0</b>	<b>8</b>	<b>3106</b>	

**Class Data Summary**

Bin #	1	2	3	4	5	6	7	8	9	10	11	12	13	14	Total Volume
Bin Class	Cycles	Cars + Trailer	2 Axle Long	Bus	2 Axle 6-Tire	3 Axle Single	4 Axle Single	4 Axle Double	5 Axle Double	>6 Axle Double	<6 Axle Multi	6 Axle Multi	>6 Axle Multi	Unclassified	Total Volume
<b>Survey Total</b>	74	2122	574	207	110	10	0	1	0	0	0	0	0	8	3106
<b>% Total</b>	2.4%	68.3%	18.5%	6.7%	3.5%	0.3%	0.0%	0.0%	0.0%	0.0%	0.0%	0.0%	0.0%	0.3%	100%
<b>Accumulated %</b>	2.4%	70.7%	89.2%	95.8%	99.4%	99.7%	99.7%	99.7%	99.7%	99.7%	99.7%	99.7%	99.7%	100.0%	
<b>Inv. Accum. %</b>	97.6%	29.3%	10.8%	4.2%	0.6%	0.3%	0.3%	0.3%	0.3%	0.3%	0.3%	0.3%	0.3%	0.0%	



**Classification Descriptions**

Bin #	Bin Description
1	Motorcycles
2	Passenger cars, including those with recreational trailers
3	2-axle pick-ups, vans, and RVs, including those with recreational trailers
4	Buses
5	2-axle, 6-tire single units
6	3-axle single units
7	4-axle single units
8	3-axle or 4-axle double unit
9	5-axle double unit
10	6-, 7-, or 8-axle double unit
11	5-axle multiple unit
12	6-axle multiple unit
13	7-or-more-axle multiple unit
14	Vehicles that could not be classified

Site notes:



**Obed Ave between Dysart Rd and Tillicum Rd**

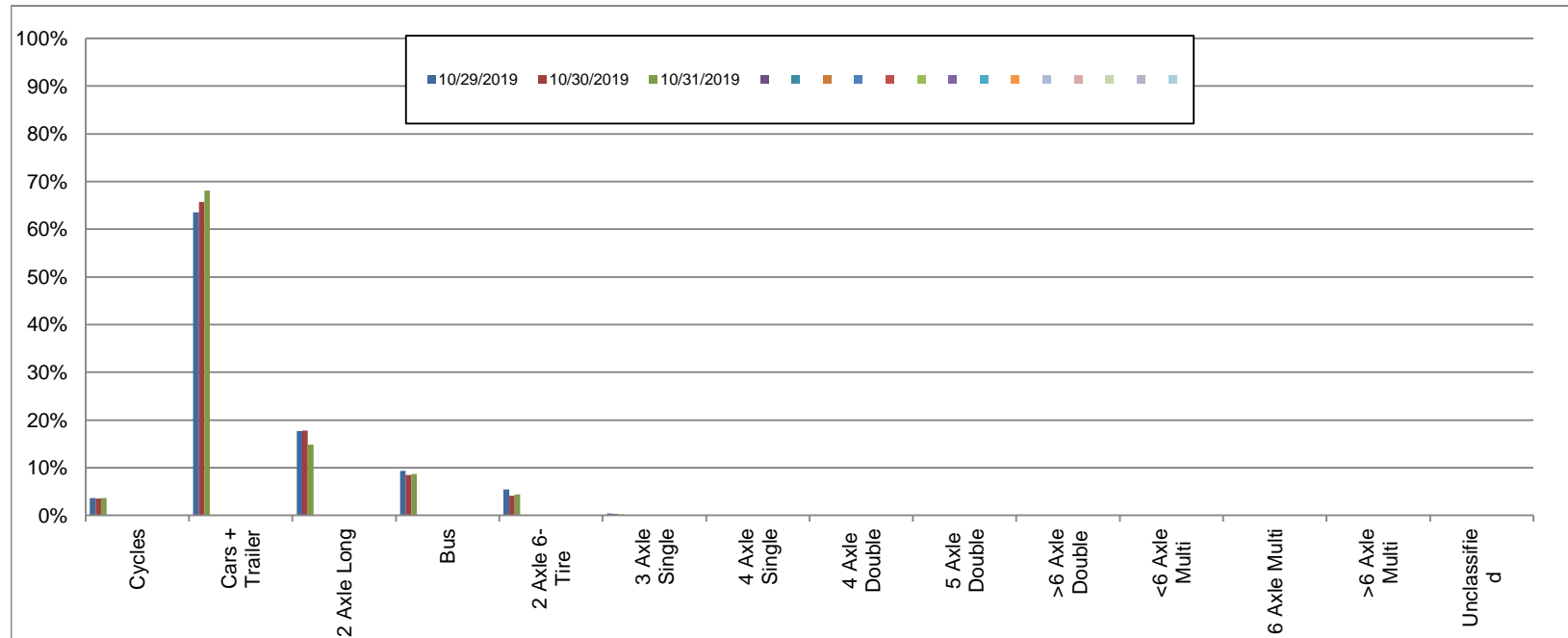
Eastbound

October 29, 2019 to October 31, 2019

Daily Class Bin Percentages															Daily Class Bin Volumes															
Bin #	1	2	3	4	5	6	7	8	9	10	11	12	13	14	1	2	3	4	5	6	7	8	9	10	11	12	13	14	Total Volume	
Bin Class	Cycles	Cars + Trailer	2 Axle Long	Bus	2 Axle 6-Tire	3 Axle Single	4 Axle Single	4 Axle Double	5 Axle Double	>6 Axle Double	<6 Axle Multi	6 Axle Multi	>6 Axle Multi	Unclassified	Cycles	Cars + Trailer	2 Axle Long	Bus	2 Axle 6-Tire	3 Axle Single	4 Axle Single	4 Axle Double	5 Axle Double	>6 Axle Double	<6 Axle Multi	6 Axle Multi	>6 Axle Multi	Unclassified	Total Volume	
10/29/2019	3.6%	63.5%	17.7%	9.3%	5.4%	0.4%	0.0%	0.0%	0.0%	0.0%	0.0%	0.0%	0.0%	0.1%	28	493	137	72	42	3	0	0	0	0	0	0	0	0	1	776
10/30/2019	3.6%	65.7%	17.8%	8.5%	4.1%	0.3%	0.0%	0.0%	0.0%	0.0%	0.0%	0.0%	0.0%	0.1%	28	518	140	67	32	2	0	0	0	0	0	0	0	0	1	788
10/31/2019	3.6%	68.1%	14.8%	8.7%	4.3%	0.2%	0.0%	0.1%	0.0%	0.0%	0.0%	0.0%	0.0%	0.1%	30	565	123	72	36	2	0	1	0	0	0	0	0	0	1	830
<b>Total</b>	3.6%	65.8%	16.7%	8.8%	4.6%	0.3%	0.0%	0.0%	0.0%	0.0%	0.0%	0.0%	0.0%	0.1%	86	1576	400	211	110	7	0	1	0	0	0	0	0	3	2394	

**Class Data Summary**

Bin #	1	2	3	4	5	6	7	8	9	10	11	12	13	14	Total Volume
Bin Class	Cycles	Cars + Trailer	2 Axle Long	Bus	2 Axle 6-Tire	3 Axle Single	4 Axle Single	4 Axle Double	5 Axle Double	>6 Axle Double	<6 Axle Multi	6 Axle Multi	>6 Axle Multi	Unclassified	Total Volume
<b>Survey Total</b>	86	1576	400	211	110	7	0	1	0	0	0	0	0	3	2394
<b>% Total</b>	3.6%	65.8%	16.7%	8.8%	4.6%	0.3%	0.0%	0.0%	0.0%	0.0%	0.0%	0.0%	0.0%	0.1%	100%
<b>Accumulated %</b>	3.6%	69.4%	86.1%	94.9%	99.5%	99.8%	99.8%	99.9%	99.9%	99.9%	99.9%	99.9%	100.0%		
<b>Inv. Accum. %</b>	96.4%	30.6%	13.9%	5.1%	0.5%	0.2%	0.2%	0.1%	0.1%	0.1%	0.1%	0.1%	0.0%		



**Classification Descriptions**

Bin #	Bin Description
1	Motorcycles
2	Passenger cars, including those with recreational trailers
3	2-axle pick-ups, vans, and RVs, including those with recreational trailers
4	Buses
5	2-axle, 6-tire single units
6	3-axle single units
7	4-axle single units
8	3-axle or 4-axle double unit
9	5-axle double unit
10	6-, 7-, or 8-axle double unit
11	5-axle multiple unit
12	6-axle multiple unit
13	7-or-more-axle multiple unit
14	Vehicles that could not be classified

Site notes: